

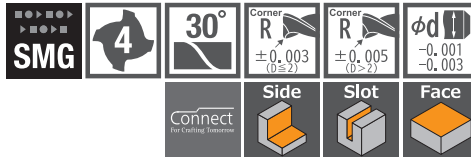
无限白金Plus涂层 高硬度钢材高精度加工用4刃长颈圆鼻铣刀

共有205种规格

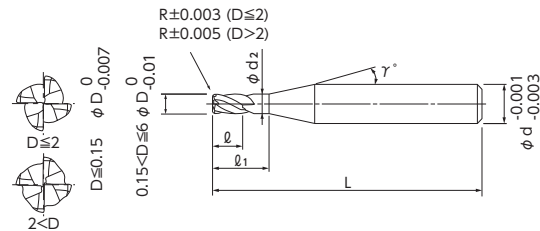
MUGEN COATING PREMIUM Plus 4-Flute Long Neck Corner Radius End Mill with Short Shank for Hardened Steel and High Accuracy Cutting Total 205 sizes

规格增加到 $\phi 6$ ，提高表面粗糙度的刀刃形状和高精度 R 角设计可改善对于高硬度钢材的高精度精加工

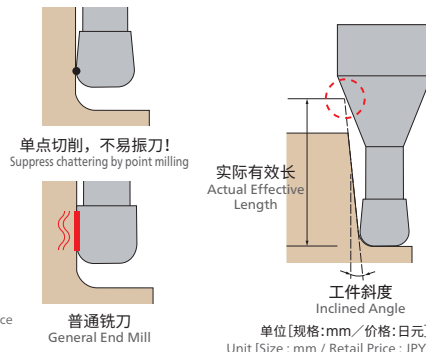
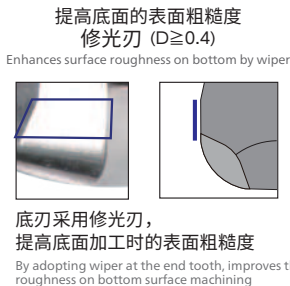
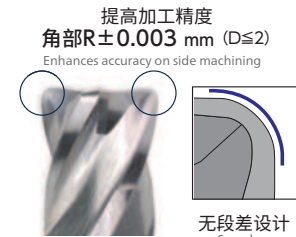
Lineup extended up to $\phi 6$, combining specialized tool design and high accuracy corner R enhance finishing performance on hardened steels



- 采用高硬度钢用无限白金Plus涂层及强倒锥形状，实现了延长刀具寿命及减轻振刀的精密加工表面。
- 可进行高效加工的4刃型铣刀。
- 4刃圆鼻铣刀，备有 $\phi 0.1 \sim \phi 6$ 的205个规格。
- MUGEN COATING PREMIUM Plus for hardened steels with strong back taper reduce chattering to realize long tool life and excellent finishing surface.
- 4-flute end mill for high efficiency machining.
- 4-Flute end mill has 205 sizes in total that lineup from the smallest diameter $\phi 0.1$ to $\phi 6$.



$\phi 0.1 \sim \phi 2$ 为底刃中心没有刃口。请注意此设计并注意加工余量。
Please be aware of stock since there is no cutting edge from the center to the bottom.



◆ 新增规格

产品代码 Code No.	(D)外径 Dia.	(R)角半径 Corner Radius	(ℓ ₁)颈长 Under Neck Length	(ℓ)刃长 Length of Cut	(d ₂)颈径 Neck Dia.	(γ)颈角 Neck Taper Angle	(d)柄径 Shank Dia.	(L)全长 Overall Length	定价(日元) Retail Price	相对于工件斜度的有效长 Actual effective length depending on inclined angle of workpiece					
										30°	1°	1°30'	2°	3°	
08-00239-01002	0.1	R0.01	0.2	0.08	0.085	15°	4	35	12,900	0.23	0.24	0.25	0.26	0.28	
08-00239-01003			0.3	0.08	0.085	15°	4	35	12,900	0.33	0.35	0.36	0.37	0.4	
08-00239-01503	0.15	R0.01	0.3	0.12	0.135	15°	4	35	12,900	0.33	0.35	0.36	0.37	0.4	
08-00239-01505			0.5	0.12	0.135	15°	4	35	12,900	0.54	0.56	0.58	0.6	0.65	
08-00239-01523		R0.02	0.3	0.12	0.135	15°	4	35	12,900	0.33	0.34	0.36	0.37	0.4	
08-00239-01525			0.5	0.12	0.135	15°	4	35	12,900	0.54	0.56	0.58	0.6	0.65	
08-00239-02203	0.2	R0.02	0.3	0.15	0.18	15°	4	35	12,900	0.34	0.35	0.37	0.38	0.41	
08-00239-02205			0.5	0.15	0.18	15°	4	35	12,900	0.55	0.57	0.59	0.61	0.66	
08-00239-02207			0.75	0.15	0.18	15°	4	35	12,900	0.81	0.84	0.87	0.9	0.97	
08-00239-02210			1	0.15	0.18	15°	4	35	12,900	1.07	1.1	1.14	1.18	1.28	
08-00239-02403		R0.05	0.3	0.15	0.18	15°	4	35	12,900	0.34	0.35	0.36	0.38	0.4	
08-00239-02405			0.5	0.15	0.18	15°	4	35	12,900	0.55	0.57	0.59	0.61	0.65	
08-00239-02407			0.75	0.15	0.18	15°	4	35	12,900	0.81	0.83	0.86	0.89	0.96	
08-00239-02410			1	0.15	0.18	15°	4	35	12,900	1.07	1.1	1.14	1.18	1.27	
08-00239-03205			R0.02	0.5	0.25	0.28	15°	4	35	12,900	0.55	0.57	0.59	0.61	0.66
08-00239-03207				0.75	0.25	0.28	15°	4	35	12,900	0.81	0.84	0.87	0.9	0.97
08-00239-03210	1	0.25		0.28	15°	4	35	12,900	1.07	1.1	1.14	1.18	1.28		
08-00239-03215	1.5	0.25		0.28	15°	4	35	12,900	1.58	1.64	1.7	1.76	1.9		
08-00239-03405	R0.05	0.5		0.25	0.28	15°	4	35	12,900	0.55	0.57	0.59	0.61	0.65	
08-00239-03407		0.75		0.25	0.28	15°	4	35	12,900	0.81	0.83	0.86	0.89	0.96	
08-00239-03410		1	0.25	0.28	15°	4	35	12,900	1.07	1.1	1.14	1.18	1.27		
08-00239-03415	1.5	0.25	0.28	15°	4	35	12,900	1.58	1.64	1.69	1.76	1.89			

订购方法
How to Order

加工案例
Machining case

请指定MHRSH430RSF 外径(D)×角半径(R)×颈长(ℓ₁)。 ※(γ)为参考值。
When you order, indicate MHRSH430RSF (D)×(R)×(ℓ₁). ※(γ) is reference value.

M-028

无限白金Plus涂层 高硬度钢材高精度加工用4刃长颈圆鼻铣刀

MUGEN COATING PREMIUM Plus 4-Flute Long Neck Corner Radius End Mill with Short Shank for Hardened Steel and High Accuracy Cutting

◆ 新增加规格

单位[规格:mm/价格:日元]
Unit [Size : mm / Retail Price : JPY]

产品代码 Code No.	(D)外径 Dia.	(R)角半径 Corner Radius	(ℓ1)颈长 Under Neck Length	(ℓ)刃长 Length of Cut	(d2)颈径 Neck Dia.	(γ)颈角 Neck Taper Angle	(d)柄径 Shank Dia.	(L)全长 Overall Length	定价(日元) Retail Price	相对于工件斜度的有效长 Actual effective length depending on inclined angle of workpiece					
										30°	1°	1°30′	2°	3°	
08-00239-04205	0.4	R0.02	0.5	0.3	0.37	15°	4	35	8,300	0.57	0.59	0.61	0.63	0.68	
08-00239-04210			1	0.3	0.37	15°	4	35	8,300	1.09	1.12	1.16	1.21	1.3	
08-00239-04215			1.5	0.3	0.37	15°	4	35	8,300	1.6	1.66	1.72	1.78	1.92	
08-00239-04220			2	0.3	0.37	15°	4	35	8,300	2.12	2.19	2.27	2.36	2.55	
08-00239-04405		R0.05	0.5	0.3	0.37	15°	4	35	8,300	0.57	0.59	0.61	0.63	0.67	
08-00239-04410			1	0.3	0.37	15°	4	35	8,300	1.08	1.12	1.16	1.2	1.3	
08-00239-04415			1.5	0.3	0.37	15°	4	35	8,300	1.6	1.66	1.71	1.78	1.92	
08-00239-04420			2	0.3	0.37	15°	4	35	8,300	2.12	2.19	2.27	2.35	2.54	
08-00239-05210	0.5	R0.02	1	0.4	0.46	15°	4	35	6,700	1.11	1.14	1.18	1.23	1.33	
08-00239-05215			1.5	0.4	0.46	15°	4	35	6,700	1.62	1.68	1.74	1.8	1.95	
08-00239-05220			2	0.4	0.46	15°	4	35	6,700	2.14	2.21	2.29	2.38	2.57	
08-00239-05225			2.5	0.4	0.46	15°	4	35	6,700	2.66	2.75	2.85	2.95	3.19	
08-00239-05410		R0.05	1	0.4	0.46	15°	4	35	6,700	1.1	1.14	1.18	1.22	1.32	
08-00239-05415			1.5	0.4	0.46	15°	4	35	6,700	1.62	1.68	1.73	1.8	1.94	
08-00239-05420			2	0.4	0.46	15°	4	35	6,700	2.14	2.21	2.29	2.37	2.56	
08-00239-05425			2.5	0.4	0.46	15°	4	35	6,700	2.65	2.75	2.84	2.95	3.18	
08-00239-05510		R0.1	1	0.4	0.46	15°	4	35	6,700	1.1	1.14	1.18	1.22	1.31	
08-00239-05515			1.5	0.4	0.46	15°	4	35	6,700	1.62	1.67	1.73	1.79	1.93	
08-00239-05520			2	0.4	0.46	15°	4	35	6,700	2.14	2.21	2.28	2.37	2.55	
08-00239-05525			2.5	0.4	0.46	15°	4	35	6,700	2.65	2.74	2.84	2.94	3.17	
08-00239-06210	0.6	R0.02	1	0.5	0.56	15°	4	35	6,700	1.11	1.14	1.18	1.23	1.33	
08-00239-06220			2	0.5	0.56	15°	4	35	6,700	2.14	2.21	2.29	2.38	2.57	
08-00239-06230			3	0.5	0.56	15°	4	35	6,700	3.17	3.28	3.4	3.53	3.81	
08-00239-06410		R0.05	1	0.5	0.56	15°	4	35	6,700	1.1	1.14	1.18	1.22	1.32	
08-00239-06420			2	0.5	0.56	15°	4	35	6,700	2.14	2.21	2.29	2.37	2.56	
08-00239-06430			3	0.5	0.56	15°	4	35	6,700	3.17	3.28	3.4	3.52	3.81	
08-00239-06510		R0.1	1	0.5	0.56	15°	4	35	6,700	1.1	1.14	1.18	1.22	1.31	
08-00239-06520			2	0.5	0.56	15°	4	35	6,700	2.14	2.21	2.28	2.37	2.55	
08-00239-06530			3	0.5	0.56	15°	4	35	6,700	3.17	3.28	3.39	3.52	3.79	
08-00239-08202		0.8	R0.02	2	0.65	0.76	15°	4	35	7,500	2.14	2.21	2.29	2.38	2.57
08-00239-08203				3	0.65	0.76	15°	4	35	7,500	3.17	3.28	3.4	3.53	3.81
08-00239-08204				4	0.65	0.76	15°	4	35	7,500	4.21	4.35	4.51	4.68	5.06
08-00239-08402	2			0.65	0.76	15°	4	35	7,500	2.14	2.21	2.29	2.37	2.56	
08-00239-08403	R0.05		3	0.65	0.76	15°	4	35	7,500	3.17	3.28	3.4	3.52	3.81	
08-00239-08404			4	0.65	0.76	15°	4	35	7,500	4.21	4.35	4.51	4.67	5.05	
08-00239-08502	R0.1		2	0.65	0.76	15°	4	35	7,500	2.14	2.21	2.28	2.37	2.55	
08-00239-08503			3	0.65	0.76	15°	4	35	7,500	3.17	3.28	3.39	3.52	3.79	
08-00239-08504			4	0.65	0.76	15°	4	35	7,500	4.2	4.35	4.5	4.67	5.04	
08-00239-08602			2	0.65	0.76	15°	4	35	7,500	2.13	2.2	2.27	2.35	2.53	
08-00239-08603	R0.2		3	0.65	0.76	15°	4	35	7,500	3.17	3.27	3.38	3.5	3.77	
08-00239-08604			4	0.65	0.76	15°	4	35	7,500	4.2	4.34	4.49	4.65	5.01	
08-00239-10202	1	R0.02	2	0.8	0.95	15°	4	35	6,800	2.16	2.23	2.31	2.4	2.59	
08-00239-10203			3	0.8	0.95	15°	4	35	6,800	3.19	3.3	3.42	3.55	3.84	
08-00239-10204			4	0.8	0.95	15°	4	35	6,800	4.23	4.37	4.53	4.7	5.08	
08-00239-10205			5	0.8	0.95	15°	4	40	6,800	5.26	5.44	5.64	5.85	6.32	
08-00239-10402		R0.05	2	0.8	0.95	15°	4	35	6,800	2.16	2.23	2.31	2.39	2.59	
08-00239-10403			3	0.8	0.95	15°	4	35	6,800	3.19	3.3	3.42	3.54	3.83	
08-00239-10404			4	0.8	0.95	15°	4	35	6,800	4.22	4.37	4.53	4.69	5.07	
08-00239-10405			5	0.8	0.95	15°	4	40	6,800	5.26	5.44	5.63	5.84	6.31	
08-00239-10502			R0.1	2	0.8	0.95	15°	4	35	6,800	2.16	2.23	2.3	2.39	2.57
08-00239-10503		3		0.8	0.95	15°	4	35	6,800	3.19	3.3	3.41	3.54	3.82	
08-00239-10504		4		0.8	0.95	15°	4	35	6,800	4.22	4.37	4.52	4.69	5.06	
08-00239-10505		5		0.8	0.95	15°	4	40	6,800	5.26	5.44	5.63	5.84	6.3	



H ~65高硬度钢
HRC Hardened Steel

H ~70高硬度钢
HRC Hardened Steel

常规系列
无限白金Plus涂层
Regular Line
MUGEN PREMIUM Plus

无限白金Plus涂层 高硬度钢材高精度加工用4刃长颈圆鼻铣刀

MUGEN COATING PREMIUM Plus 4-Flute Long Neck Corner Radius End Mill with Short Shank for Hardened Steel and High Accuracy Cutting

◆ 新增加规格

单位 [规格:mm / 价格:日元]
Unit [Size : mm / Retail Price : JPY]

产品代码 Code No.	(D)外径 Dia.	(R)角半径 Corner Radius	(ℓ ₁)颈长 Under Neck Length	(ℓ)刃长 Length of Cut	(d ₂)颈径 Neck Dia.	(γ)颈角 Neck Taper Angle	(d)柄径 Shank Dia.	(L)全长 Overall Length	定价(日元) Retail Price	相对于工件斜度的有效长 Actual effective length depending on inclined angle of workpiece						
										30°	1°	1°30'	2°	3°		
08-00239-10602	1	R0.2	2	0.8	0.95	15°	4	35	6,800	2.15	2.22	2.29	2.37	2.55		
08-00239-10603			3	0.8	0.95	15°	4	35	6,800	3.19	3.29	3.4	3.52	3.79		
08-00239-10604			4	0.8	0.95	15°	4	35	6,800	4.22	4.36	4.51	4.67	5.04		
08-00239-10605			5	0.8	0.95	15°	4	40	6,800	5.25	5.43	5.62	5.82	6.28		
08-00239-10702			2	0.8	0.95	15°	4	35	6,800	2.15	2.21	2.28	2.36	2.53		
08-00239-10703		3	0.8	0.95	15°	4	35	6,800	3.18	3.28	3.39	3.51	3.77			
08-00239-10704		4	0.8	0.95	15°	4	35	6,800	4.22	4.35	4.5	4.66	5.01			
08-00239-10705		5	0.8	0.95	15°	4	40	6,800	5.25	5.42	5.61	5.81	6.26			
08-00239-15203		1.5	R0.02	3	1.2	1.43	15°	4	35	7,100	3.23	3.34	3.46	3.59	3.88	
08-00239-15204				4	1.2	1.43	15°	4	35	7,100	4.26	4.41	4.57	4.74	5.13	
08-00239-15206	6			1.2	1.43	15°	4	40	7,100	6.33	6.55	6.79	7.04	7.61		
08-00239-15208	8			1.2	1.43	15°	4	40	7,600	8.4	8.69	9	9.34	10.1		
08-00239-15403	3			1.2	1.43	15°	4	35	7,100	3.23	3.34	3.46	3.59	3.87		
08-00239-15404	4		1.2	1.43	15°	4	35	7,100	4.26	4.41	4.57	4.74	5.12			
08-00239-15406	6		1.2	1.43	15°	4	40	7,100	6.33	6.55	6.78	7.04	7.6			
08-00239-15408	8		1.2	1.43	15°	4	40	7,600	8.4	8.69	9	9.34	10.09			
08-00239-15503	3		1.2	1.43	15°	4	35	7,100	3.23	3.34	3.45	3.58	3.86			
08-00239-15504	4		1.2	1.43	15°	4	35	7,100	4.26	4.41	4.56	4.73	5.11			
08-00239-15506	6	1.2	1.43	15°	4	40	7,100	6.33	6.55	6.78	7.03	7.59				
08-00239-15508	8	1.2	1.43	15°	4	40	7,600	8.4	8.69	9	9.33	10.08				
08-00239-15603	1.5	R0.05	3	1.2	1.43	15°	4	35	7,100	3.22	3.33	3.44	3.57	3.84		
08-00239-15604			4	1.2	1.43	15°	4	35	7,100	4.26	4.4	4.55	4.72	5.08		
08-00239-15606			6	1.2	1.43	15°	4	40	7,100	6.33	6.54	6.77	7.01	7.57		
08-00239-15608			8	1.2	1.43	15°	4	40	7,600	8.39	8.68	8.98	9.31	10.06		
08-00239-15703			3	1.2	1.43	15°	4	35	7,100	3.22	3.32	3.43	3.55	3.82		
08-00239-15704		4	1.2	1.43	15°	4	35	7,100	4.25	4.39	4.54	4.7	5.06			
08-00239-15706		6	1.2	1.43	15°	4	40	7,100	6.32	6.53	6.76	7	7.55			
08-00239-15708		8	1.2	1.43	15°	4	40	7,600	8.39	8.67	8.97	9.3	10.03			
08-00239-15803		3	1.2	1.43	15°	4	35	7,100	3.21	3.31	3.41	3.52	3.77			
08-00239-15804		4	1.2	1.43	15°	4	35	7,100	4.25	4.38	4.52	4.67	5.01			
08-00239-15806	6	1.2	1.43	15°	4	40	7,100	6.32	6.52	6.74	6.97	7.5				
08-00239-15808	8	1.2	1.43	15°	4	40	7,600	8.38	8.66	8.95	9.27	9.98				
08-00239-20204	2	R0.02	4	1.6	1.91	15°	4	35	7,100	4.3	4.45	4.61	4.78	5.17		
08-00239-20206			6	1.6	1.91	15°	4	35	7,100	6.37	6.59	6.83	7.08	7.66		
08-00239-20208			8	1.6	1.91	15°	4	40	7,600	8.44	8.73	9.05	9.38	10.14		
08-00239-20210			10	1.6	1.91	15°	4	40	7,600	10.5	10.87	11.26	11.68	12.63		
08-00239-20404			R0.05	4	1.6	1.91	15°	4	35	7,100	4.3	4.45	4.61	4.78	5.16	
08-00239-20406				6	1.6	1.91	15°	4	35	7,100	6.37	6.59	6.83	7.08	7.65	
08-00239-20408				8	1.6	1.91	15°	4	40	7,600	8.44	8.73	9.04	9.38	10.14	
08-00239-20410				10	1.6	1.91	15°	4	40	7,600	10.5	10.87	11.26	11.68	12.62	
08-00239-20504				R0.1	4	1.6	1.91	15°	4	35	7,100	4.3	4.45	4.6	4.77	5.15
08-00239-20506					6	1.6	1.91	15°	4	35	7,100	6.37	6.59	6.82	7.07	7.64
08-00239-20508		8			1.6	1.91	15°	4	40	7,600	8.43	8.73	9.04	9.37	10.13	
08-00239-20510		10			1.6	1.91	15°	4	40	7,600	10.5	10.86	11.25	11.67	12.61	
08-00239-20604		R0.2			4	1.6	1.91	15°	4	35	7,100	4.3	4.44	4.59	4.76	5.13
08-00239-20606					6	1.6	1.91	15°	4	35	7,100	6.36	6.58	6.81	7.06	7.62
08-00239-20608			8		1.6	1.91	15°	4	40	7,600	8.43	8.72	9.03	9.36	10.1	
08-00239-20610			10		1.6	1.91	15°	4	40	7,600	10.5	10.86	11.24	11.66	12.59	
08-00239-20704			R0.3		4	1.6	1.91	15°	4	35	7,100	4.29	4.43	4.58	4.74	5.11
08-00239-20706					6	1.6	1.91	15°	4	35	7,100	6.36	6.57	6.8	7.04	7.59
08-00239-20708				8	1.6	1.91	15°	4	40	7,600	8.43	8.71	9.02	9.34	10.08	
08-00239-20710				10	1.6	1.91	15°	4	40	7,600	10.5	10.85	11.23	11.64	12.56	
08-00239-20804				R0.5	4	1.6	1.91	15°	4	35	7,100	4.29	4.42	4.56	4.71	5.06
08-00239-20806					6	1.6	1.91	15°	4	35	7,100	6.35	6.56	6.78	7.01	7.54
08-00239-20808		8			1.6	1.91	15°	4	40	7,600	8.42	8.7	8.99	9.31	10.03	
08-00239-20810		10			1.6	1.91	15°	4	40	7,600	10.49	10.84	11.21	11.61	12.52	



高硬度钢~65 HRC
Hardened Steel HRC

高硬度钢~70 HRC
Hardened Steel HRC

常规系列
无限白金Plus涂层

Regular Line
MUGEN PREMIUM Plus

订购方法
How to Order

请指定MHRSH430RSF 外径(D)×角半径(R)×颈长(ℓ₁)。
When you order, indicate MHRSH430RSF (D)×(R)×(ℓ₁).

加工案例
Machining case

M-028

无限白金Plus涂层 高硬度钢材高精度加工用4刃长颈圆鼻铣刀

MUGEN COATING PREMIUM Plus 4-Flute Long Neck Corner Radius End Mill with Short Shank for Hardened Steel and High Accuracy Cutting

◆ 新增加规格

单位 [规格:mm / 价格:日元]
Unit [Size : mm / Retail Price : JPY]

产品代码 Code No.	(D)外径 Dia.	(R)角半径 Corner Radius	(ℓ1)颈长 Under Neck Length	(ℓ)刃长 Length of Cut	(d2)颈径 Neck Dia.	(γ)颈角 Neck Taper Angle	(d)柄径 Shank Dia.	(L)全长 Overall Length	定价(日元) Retail Price	相对于工件斜度的有效长 Actual effective length depending on inclined angle of workpiece				
										30°	1°	1°30'	2°	3°
◆ 08-00239-30404	3	R0.05	4	2.5	2.85	15°	6	45	7,900	4.42	4.57	4.73	4.91	5.3
◆ 08-00239-30406			6	2.5	2.85	15°	6	45	7,900	6.48	6.71	6.95	7.21	7.79
◆ 08-00239-30408			8	2.5	2.85	15°	6	45	7,900	8.55	8.85	9.17	9.51	10.28
◆ 08-00239-30410			10	2.5	2.85	15°	6	50	8,800	10.62	10.99	11.38	11.81	12.76
◆ 08-00239-30412			12	2.5	2.85	15°	6	50	8,800	12.69	13.13	13.6	14.11	15.25
◆ 08-00239-30415			15	2.5	2.85	15°	6	55	9,700	15.79	16.34	16.92	17.56	18.98
◆ 08-00239-30504		R0.1	4	2.5	2.85	15°	6	45	7,900	4.42	4.57	4.73	4.9	5.29
◆ 08-00239-30506			6	2.5	2.85	15°	6	45	7,900	6.48	6.71	6.94	7.2	7.78
◆ 08-00239-30508			8	2.5	2.85	15°	6	45	7,900	8.55	8.84	9.16	9.5	10.26
◆ 08-00239-30510			10	2.5	2.85	15°	6	50	8,800	10.62	10.98	11.38	11.8	12.75
◆ 08-00239-30512			12	2.5	2.85	15°	6	50	8,800	12.68	13.12	13.59	14.1	15.24
◆ 08-00239-30515			15	2.5	2.85	15°	6	55	9,700	15.79	16.33	16.92	17.55	18.97
◆ 08-00239-30604		R0.2	4	2.5	2.85	15°	6	45	7,900	4.41	4.56	4.72	4.89	5.27
◆ 08-00239-30606			6	2.5	2.85	15°	6	45	7,900	6.48	6.7	6.93	7.19	7.75
◆ 08-00239-30608			8	2.5	2.85	15°	6	45	7,900	8.55	8.84	9.15	9.49	10.24
◆ 08-00239-30610			10	2.5	2.85	15°	6	50	8,800	10.61	10.98	11.37	11.79	12.73
◆ 08-00239-30612			12	2.5	2.85	15°	6	50	8,800	12.68	13.12	13.58	14.09	15.21
◆ 08-00239-30615			15	2.5	2.85	15°	6	55	9,700	15.78	16.33	16.91	17.54	18.94
◆ 08-00239-30704		R0.3	4	2.5	2.85	15°	6	45	7,900	4.41	4.55	4.71	4.87	5.24
◆ 08-00239-30706			6	2.5	2.85	15°	6	45	7,900	6.48	6.69	6.92	7.17	7.73
◆ 08-00239-30708			8	2.5	2.85	15°	6	45	7,900	8.54	8.83	9.14	9.47	10.22
◆ 08-00239-30710			10	2.5	2.85	15°	6	50	8,800	10.61	10.97	11.36	11.77	12.7
◆ 08-00239-30712			12	2.5	2.85	15°	6	50	8,800	12.68	13.11	13.57	14.07	15.19
◆ 08-00239-30715			15	2.5	2.85	15°	6	55	9,700	15.78	16.32	16.9	17.52	18.92
◆ 08-00239-30804		R0.5	4	2.5	2.85	15°	6	45	7,900	4.4	4.54	4.69	4.84	5.2
◆ 08-00239-30806			6	2.5	2.85	15°	6	45	7,900	6.47	6.68	6.9	7.14	7.68
◆ 08-00239-30808			8	2.5	2.85	15°	6	45	7,900	8.54	8.82	9.12	9.44	10.17
◆ 08-00239-30810			10	2.5	2.85	15°	6	50	8,800	10.6	10.96	11.33	11.74	12.66
◆ 08-00239-30812			12	2.5	2.85	15°	6	50	8,800	12.67	13.1	13.55	14.04	15.14
◆ 08-00239-30815			15	2.5	2.85	15°	6	55	9,700	15.77	16.31	16.88	17.49	18.87
◆ 08-00239-40508	4	R0.1	8	3.2	3.8	15°	6	45	10,800	8.65	8.94	9.26	9.61	10.38
◆ 08-00239-40512			12	3.2	3.8	15°	6	50	10,800	12.78	13.22	13.7	14.21	15.35
◆ 08-00239-40516			16	3.2	3.8	15°	6	55	10,800	16.92	17.5	18.13	18.81	Free
◆ 08-00239-40520			20	3.2	3.8	15°	6	55	12,100	21.05	21.78	22.56	23.41	Free
◆ 08-00239-40608		R0.2	8	3.2	3.8	15°	6	45	10,800	8.64	8.94	9.25	9.59	10.36
◆ 08-00239-40612			12	3.2	3.8	15°	6	50	10,800	12.78	13.22	13.69	14.19	15.33
◆ 08-00239-40616			16	3.2	3.8	15°	6	55	10,800	16.91	17.5	18.12	18.79	Free
◆ 08-00239-40620			20	3.2	3.8	15°	6	55	12,100	21.05	21.77	22.55	23.39	Free
◆ 08-00239-40708		R0.3	8	3.2	3.8	15°	6	45	10,800	8.64	8.93	9.24	9.58	10.33
◆ 08-00239-40712			12	3.2	3.8	15°	6	50	10,800	12.77	13.21	13.68	14.18	15.31
◆ 08-00239-40716			16	3.2	3.8	15°	6	55	10,800	16.91	17.49	18.11	18.78	Free
◆ 08-00239-40720			20	3.2	3.8	15°	6	55	12,100	21.04	21.77	22.54	23.38	Free
◆ 08-00239-40808	R0.5	8	3.2	3.8	15°	6	45	10,800	8.63	8.92	9.22	9.55	10.29	
◆ 08-00239-40812		12	3.2	3.8	15°	6	50	10,800	12.77	13.2	13.65	14.15	15.26	
◆ 08-00239-40816		16	3.2	3.8	15°	6	55	10,800	16.9	17.47	18.09	18.75	Free	
◆ 08-00239-40820		20	3.2	3.8	15°	6	55	12,100	21.04	21.75	22.52	23.35	Free	



H ~65高硬度钢
HRC Hardened Steel

H ~70高硬度钢
HRC Hardened Steel

常规系列
无限白金Plus涂层
Regular Line
MUGEN PREMIUM Plus

无限白金Plus涂层 高硬度钢材高精度加工用4刃长颈圆鼻铣刀

MUGEN COATING PREMIUM Plus 4-Flute Long Neck Corner Radius End Mill with Short Shank for Hardened Steel and High Accuracy Cutting

◆ 新增加规格

单位 [规格: mm / 价格: 日元]
Unit [Size: mm / Retail Price: JPY]

产品代码 Code No.	(D)外径 Dia.	(R)角半径 Corner Radius	(ℓ ₁)颈长 Under Neck Length	(ℓ)刃长 Length of Cut	(d ₂)颈径 Neck Dia.	(γ)颈角 Neck Taper Angle	(d)柄径 Shank Dia.	(L)全长 Overall Length	定价(日元) Retail Price	相对于工件斜度的有效长 Actual effective length depending on inclined angle of workpiece					
										30°	1°	1°30'	2°	3°	
◆ 08-00239-50515	5	R0.1	15	4	4.75	15°	6	50	15,200	15.98	16.53	17.13	Free	Free	
◆ 08-00239-50520			20	4	4.75	15°	6	55	15,200	21.15	21.88	Free	Free	Free	
◆ 08-00239-50615		R0.2	15	4	4.75	15°	6	50	15,200	15.98	16.53	17.12	Free	Free	
◆ 08-00239-50620			20	4	4.75	15°	6	55	15,200	21.14	21.87	Free	Free	Free	
◆ 08-00239-50715		R0.3	15	4	4.75	15°	6	50	15,200	15.97	16.52	17.1	Free	Free	
◆ 08-00239-50720			20	4	4.75	15°	6	55	15,200	21.14	21.87	Free	Free	Free	
◆ 08-00239-50815		R0.5	15	4	4.75	15°	6	50	15,200	15.97	16.5	17.08	Free	Free	
◆ 08-00239-50820			20	4	4.75	15°	6	55	15,200	21.13	21.85	Free	Free	Free	
◆ 08-00239-60512		6	R0.1	12	5	5.7	-	6	45	11,000	Free	Free	Free	Free	Free
◆ 08-00239-60518				18	5	5.7	-	6	50	13,600	Free	Free	Free	Free	Free
◆ 08-00239-60524				24	5	5.7	-	6	60	13,600	Free	Free	Free	Free	Free
◆ 08-00239-60530				30	5	5.7	-	6	65	13,600	Free	Free	Free	Free	Free
◆ 08-00239-60612			R0.2	12	5	5.7	-	6	45	11,000	Free	Free	Free	Free	Free
◆ 08-00239-60618				18	5	5.7	-	6	50	13,600	Free	Free	Free	Free	Free
◆ 08-00239-60624	24			5	5.7	-	6	60	13,600	Free	Free	Free	Free	Free	
◆ 08-00239-60630	30			5	5.7	-	6	65	13,600	Free	Free	Free	Free	Free	
◆ 08-00239-60712	R0.3		12	5	5.7	-	6	45	11,000	Free	Free	Free	Free	Free	
◆ 08-00239-60718			18	5	5.7	-	6	50	13,600	Free	Free	Free	Free	Free	
◆ 08-00239-60724			24	5	5.7	-	6	60	13,600	Free	Free	Free	Free	Free	
◆ 08-00239-60730			30	5	5.7	-	6	65	13,600	Free	Free	Free	Free	Free	
◆ 08-00239-60812			R0.5	12	5	5.7	-	6	45	11,000	Free	Free	Free	Free	Free
◆ 08-00239-60818				18	5	5.7	-	6	50	13,600	Free	Free	Free	Free	Free
◆ 08-00239-60824				24	5	5.7	-	6	60	13,600	Free	Free	Free	Free	Free
◆ 08-00239-60830				30	5	5.7	-	6	65	13,600	Free	Free	Free	Free	Free
◆ 08-00239-60912	R1		12	5	5.7	-	6	45	11,000	Free	Free	Free	Free	Free	
◆ 08-00239-60918			18	5	5.7	-	6	50	13,600	Free	Free	Free	Free	Free	
◆ 08-00239-60924			24	5	5.7	-	6	60	13,600	Free	Free	Free	Free	Free	
◆ 08-00239-60930			30	5	5.7	-	6	65	13,600	Free	Free	Free	Free	Free	

订购方法

How to Order

请指定MHRSH43ORSF 外径(D)×角半径(R)×颈长(ℓ₁)。
When you order, indicate MHRSH43ORSF (D)×(R)×(ℓ₁).

加工案例

Machining case

M-028

◎ 高硬度钢~65 H
Hardened Steel HRC

◎ 高硬度钢~70 H
Hardened Steel HRC

常规系列
无限白金Plus涂层

Regular Line
MUGEN PREMIUM Plus