

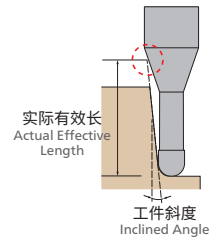
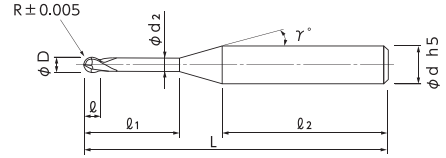
无限涂层 短柄造型长颈球头铣刀 (热缩刀柄用)

共有60种规格
Total 60 sizes

MUGEN COATING 2-Flute Long Neck Ball End Mill with Short Shank

标准长颈球头铣刀 支持热缩刀柄的短柄造型

Standard type long neck ball end mill. Suitable for shrink fit holder



- 短柄造型 (热缩刀柄用)。
- It fits for shrink chuck system.

单位 [规格:mm / 价格:日元]
Unit [Size : mm / Retail Price : JPY]

产品代码 Code No.	(R)球头半径 Radius	(ℓ1)颈长 Under Neck Length	(ℓ)刃长 Length of Cut	(D)外径 Dia.	(d2)颈径 Neck Dia.	(γ)颈角 Neck Taper Angle	(d)柄径 Shank Dia.	(ℓ2)柄长 Shank Length	(L)全长 Overall Length	定价(日元) Retail Price	相对于工件斜度的有效长 Actual effective length depending on inclined angle of workpiece				
											30°	1°	1°30'	2°	3°
08-00525-00103	R0.1	0.5	0.15	0.2	0.18	15°	4	27.3	35	8,800	0.55	0.56	0.58	0.60	0.64
08-00525-00105		0.75	0.15	0.2	0.18	15°	4	27.1	35	8,800	0.81	0.83	0.86	0.89	0.95
08-00525-00107		1	0.15	0.2	0.18	15°	4	26.8	35	8,800	1.06	1.10	1.13	1.17	1.26
08-00525-00109		1.25	0.15	0.2	0.18	15°	4	26.6	35	9,600	1.32	1.37	1.41	1.46	1.57
08-00525-00151	R0.15	0.5	0.2	0.3	0.28	15°	4	27.5	35	8,600	0.55	0.56	0.57	0.59	0.63
08-00525-00152		0.6	0.2	0.3	0.28	15°	4	27.4	35	8,600	0.65	0.67	0.69	0.71	0.75
08-00525-00153		0.75	0.2	0.3	0.28	15°	4	27.3	35	8,600	0.80	0.83	0.85	0.88	0.94
08-00525-00154		1	0.2	0.3	0.28	15°	4	27	35	8,600	1.06	1.09	1.13	1.17	1.25
08-00525-00155	R0.2	1.25	0.2	0.3	0.28	15°	4	26.8	35	8,600	1.32	1.36	1.41	1.45	1.56
08-00525-00156		1.5	0.2	0.3	0.28	15°	4	26.5	35	9,200	1.58	1.63	1.68	1.74	1.87
08-00525-00157		1.75	0.2	0.3	0.28	15°	4	26.3	35	9,200	1.84	1.90	1.96	2.03	2.18
08-00525-00202		0.75	0.3	0.4	0.37	15°	4	27.4	35	5,900	0.82	0.84	0.87	0.89	0.95
08-00525-00203	R0.2	1	0.3	0.4	0.37	15°	4	27.2	35	5,900	1.08	1.11	1.14	1.18	1.26
08-00525-00204		1.5	0.3	0.4	0.37	15°	4	26.7	35	6,000	1.60	1.65	1.70	1.75	1.88
08-00525-00205		2	0.3	0.4	0.37	15°	4	26.2	35	6,200	2.11	2.18	2.25	2.33	2.50
08-00525-00206		2.5	0.3	0.4	0.37	15°	4	25.7	35	6,400	2.63	2.72	2.81	2.90	3.13
08-00525-00251	R0.25	1	0.35	0.5	0.46	15°	4	27.3	35	5,900	1.10	1.13	1.16	1.19	1.27
08-00525-00252		1.5	0.35	0.5	0.46	15°	4	26.8	35	5,900	1.61	1.66	1.71	1.77	1.89
08-00525-00253		2	0.35	0.5	0.46	15°	4	26.3	35	5,900	2.13	2.20	2.27	2.34	2.51
08-00525-00254		2.5	0.35	0.5	0.46	15°	4	25.8	35	5,900	2.65	2.73	2.82	2.92	3.14
08-00525-00255	R0.3	3	0.35	0.5	0.46	15°	4	25.3	35	5,900	3.16	3.27	3.38	3.49	3.76
08-00525-00301		1.5	0.45	0.6	0.56	15°	4	27	35	4,500	1.61	1.66	1.71	1.76	1.88
08-00525-00302		2	0.45	0.6	0.56	15°	4	26.5	35	4,500	2.13	2.19	2.26	2.34	2.50
08-00525-00303		2.5	0.45	0.6	0.56	15°	4	26	35	4,600	2.65	2.73	2.82	2.91	3.12
08-00525-00304	R0.3	3	0.45	0.6	0.56	15°	4	25.5	35	4,600	3.16	3.26	3.37	3.49	3.75
08-00525-00305		3.5	0.45	0.6	0.56	15°	4	25	35	4,800	3.68	3.80	3.92	4.06	4.37
08-00525-00306		4	0.45	0.6	0.56	15°	4	29.5	40	4,800	4.20	4.33	4.48	4.64	4.99
08-00525-00307		4.5	0.45	0.6	0.56	15°	4	29	40	4,800	4.71	4.87	5.03	5.21	5.61
08-00525-00308	R0.3	5	0.45	0.6	0.56	15°	4	28.5	40	4,800	5.23	5.40	5.59	5.79	6.23
08-00525-00309		5.5	0.45	0.6	0.56	15°	4	28	40	4,800	5.75	5.94	6.14	6.36	6.85
08-00525-00310		6	0.45	0.6	0.56	15°	4	27.5	40	4,800	6.26	6.47	6.70	6.94	7.48

订购方法
How to Order

请指定MRB230SF 球头半径(R)×颈长(ℓ1)。
When you order, indicate MRB230SF (R)×(ℓ1).

※(γ)为参考值。
※(γ) is reference value.

球头
Long Neck
Ball
涂层
Coating

碳素钢
Carbon Steel P

合金钢
Alloy Steel P

调质钢
Prehardened Steel P

高硬度钢~52
Hardened Steel HRC H

不锈钢
Stainless Steel M

铝合金
Aluminium Alloy N

铜合金
Copper N

树脂
Resin O

常规系列
无限涂层
长颈造型
Regular Line
MUGEN COATING
Long Neck Type

无限涂层 短柄造型长颈球头铣刀 (热缩刀柄用)

MUGEN COATING 2-Flute Long Neck Ball End Mill with Short Shank

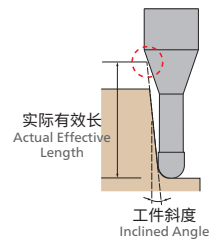
长颈
Long Neck

球头
Ball



涂层
Coating

Ball



单位 [规格:mm / 价格:日元]
Unit [Size : mm / Retail Price : JPY]

产品代码 Code No.	(R)球头半径 Radius	(ℓ ₁)颈长 Under Neck Length	(ℓ)刃长 Length of Cut	(D)外径 Dia.	(d ₂)颈径 Neck Dia.	(γ)颈角 Neck Taper Angle	(d)柄径 Shank Dia.	(ℓ ₂)柄长 Shank Length	(L)全长 Overall Length	定价(日元) Retail Price	相对于工件斜度的有效长 Actual effective length depending on inclined angle of workpiece				
											30°	1°	1°30'	2°	3°
08-00525-00401	R0.4	2	0.6	0.8	0.76	15°	4	26.9	35	4,500	2.13	2.19	2.25	2.32	2.48
08-00525-00402		3	0.6	0.8	0.76	15°	4	25.9	35	4,800	3.16	3.26	3.36	3.47	3.72
08-00525-00403		4	0.6	0.8	0.76	15°	4	29.9	40	4,800	4.19	4.33	4.47	4.62	4.97
08-00525-00404		5	0.6	0.8	0.76	15°	4	28.9	40	4,800	5.23	5.40	5.58	5.77	6.21
08-00525-00501	R0.5	3	0.75	1	0.95	15°	4	26.3	35	3,800	3.18	3.27	3.37	3.48	3.72
08-00525-00502		4	0.75	1	0.95	15°	4	25.3	35	4,300	4.21	4.34	4.48	4.63	4.97
08-00525-00503		5	0.75	1	0.95	15°	4	29.3	40	4,300	5.24	5.41	5.59	5.78	6.21
08-00525-00504		6	0.75	1	0.95	15°	4	28.3	40	4,600	6.28	6.48	6.69	6.93	7.45
08-00525-00505		8	0.75	1	0.95	15°	4	26.3	40	4,600	8.34	8.62	8.91	9.23	9.94
08-00525-00506	10	0.75	1	0.95	15°	4	24.3	40	4,600	10.41	10.76	11.13	11.53	12.42	
08-00525-00751	R0.75	3	1.1	1.5	1.45	15°	4	27.2	35	4,400	3.17	3.25	3.34	3.44	3.66
08-00525-00752		4	1.1	1.5	1.45	15°	4	26.2	35	4,400	4.20	4.32	4.45	4.59	4.91
08-00525-00754		6	1.1	1.5	1.45	15°	4	29.2	40	4,400	6.27	6.46	6.67	6.89	7.39
08-00525-00755		8	1.1	1.5	1.45	15°	4	27.2	40	4,400	8.34	8.60	8.88	9.19	9.88
08-00525-00756		10	1.1	1.5	1.45	15°	4	25.2	40	4,400	10.40	10.74	11.10	11.49	12.36
08-00525-01001	R1	3	1.5	2	1.94	15°	4	28.1	35	3,800	3.18	3.25	3.34	3.43	3.63
08-00525-01002		4	1.5	2	1.94	15°	4	27.1	35	3,800	4.21	4.32	4.45	4.58	4.87
08-00525-01003		6	1.5	2	1.94	15°	4	25.1	35	4,300	6.28	6.46	6.66	6.88	7.36
08-00525-01004		8	1.5	2	1.94	15°	4	28.1	40	4,600	8.35	8.60	8.88	9.18	9.84
08-00525-01005		10	1.5	2	1.94	15°	4	26.1	40	4,600	10.41	10.74	11.10	11.48	12.33
08-00525-01006		12	1.5	2	1.94	15°	4	29.1	45	4,600	12.48	12.88	13.31	13.77	14.82
08-00525-01007		14	1.5	2	1.94	15°	4	27.1	45	4,600	14.55	15.02	15.53	16.07	17.30
08-00525-01008		16	1.5	2	1.94	15°	4	25.1	45	4,600	16.62	17.16	17.75	18.37	19.79
08-00525-01009		18	1.5	2	1.94	15°	4	28.1	50	4,600	18.68	19.30	19.96	20.67	Free
08-00525-01010		20	1.5	2	1.94	15°	4	26.1	50	4,600	20.75	21.44	22.18	22.97	Free
08-00525-01501	R1.5	6	2.5	3	2.85	15°	4	31.8	40	4,300	6.44	6.61	6.79	7.00	7.45
08-00525-01502		8	2.5	3	2.85	15°	4	29.8	40	4,300	8.50	8.75	9.01	9.29	9.93
08-00525-01503		10	2.5	3	2.85	15°	4	27.8	40	4,600	10.57	10.89	11.23	11.59	Free
08-00525-01504		12	2.5	3	2.85	15°	4	25.8	40	4,600	12.64	13.03	13.44	13.89	Free

P 碳素钢
Carbon Steel

P 合金钢
Alloy Steel

P 调质钢
Prehardened Steel

H ~52高硬度钢
HRC Hardened Steel

M 不锈钢
Stainless Steel

N 铝合金
Aluminium Alloy

N 铜合金
Copper

O 树脂
Resin

常规系列
无限涂层
长颈造型
Regular Line
MUGEN COATING
Long Neck Type