

MRBTNH345

规格 R0.5×颈角30' ~ R2×颈角1°
Size R0.5×neck taper angle30'~R2×neck taper angle1°

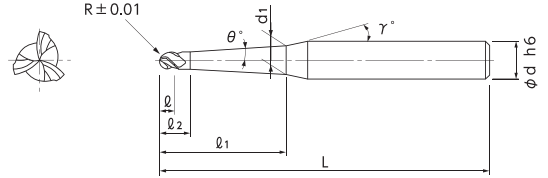
∞ Premium **≤65 HRC**

无限白金涂层 长颈锥形3刃球头铣刀

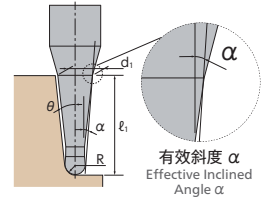
共有69种规格
Total 69 sizes

采用3刃强螺旋角和锥颈形状，可对深沟部位进行高效率加工

3-flute with high helix angle and taper neck design for deep area milling with high efficiency



- 颈部为锥形设计，与传统长颈型刀具相比刚性更高。
- 采用耐热性优异的无限白金涂层，即使加工高硬度钢也能保持延长刀具寿命。
- 采用NS TOOL自主研发的3刃造型，实现高效加工。
- Higher rigidity brought by taper neck than existing long neck.
- MUGEN COATING PREMIUM because of high heat resistance, realized long tool life for hardened steels.
- High effective machining achieved by NS original 3-flute design.



★ 返修对应（柄长须在15mm以上。详情请咨询本公司。）

单位 [规格: mm / 价格: 日元]
Unit [Size: mm / Retail Price: JPY]

产品代码 Code No.	(R)球头半径 Radius	(θ)颈角 Neck Taper Angle	(ℓ1)颈长 Under Neck Length	(d1)颈径 Neck Dia.	(ℓ)刃长 Length of Cut	(ℓ2)颈长2 Under Neck Length2	(γ)颈角2 Neck Taper Angle 2	(α)有效斜度 Effective Inclined Angle	(d)柄径 Shank Dia.	(L)全长 Overall Length	定价(日元) Retail Price	
08-00590-05020	R0.5	30'	12	1.11	0.75	1.25	12°	0°15'	6	60	8,100	
08-00590-05021			16	1.18	0.75	1.25	12°	0°19'	6	60	8,100	
08-00590-05022			20	1.25	0.75	1.25	12°	0°21'	6	70	10,300	
08-00590-05023			25	1.34	0.75	1.25	12°	0°23'	6	70	10,900	
08-00590-05024			30	1.42	0.75	1.25	12°	0°24'	6	70	11,400	
08-00590-05030			12	1.30	0.75	1.25	12°	0°42'	6	60	8,100	
08-00590-05031		16	1.44	0.75	1.25	12°	0°46'	6	60	8,100		
08-00590-05032		20	1.58	0.75	1.25	12°	0°49'	6	70	10,300		
08-00590-05033		25	1.75	0.75	1.25	12°	0°51'	6	70	10,900		
08-00590-05034		30	1.93	0.75	1.25	12°	0°53'	6	70	11,400		
08-00590-05040		12	1.48	0.75	1.25	12°	1°09'	6	60	8,100		
08-00590-05041		16	1.69	0.75	1.25	12°	1°14'	6	60	8,100		
08-00590-05042		20	1.90	0.75	1.25	12°	1°17'	6	70	10,300		
08-00590-05043		25	2.17	0.75	1.25	12°	1°20'	6	70	10,900		
08-00590-05044		30	2.43	0.75	1.25	12°	1°21'	6	70	11,400		
08-00590-05050		20	2.23	0.75	1.25	12°	1°45'	6	70	10,300		
08-00590-05051		30	2.93	0.75	1.25	12°	1°50'	6	70	11,400		
08-00590-07520		R0.75	30'	12	1.58	1.1	1.85	12°	0°12'	6	60	8,600
08-00590-07521				16	1.65	1.1	1.85	12°	0°16'	6	60	9,400
08-00590-07523				20	1.72	1.1	1.85	12°	0°19'	6	70	9,400
08-00590-07524				25	1.81	1.1	1.85	12°	0°21'	6	70	10,100
08-00590-07525				30	1.90	1.1	1.85	12°	0°22'	6	70	10,100
08-00590-07530				12	1.76	1.1	1.85	12°	0°37'	6	60	8,600
08-00590-07531			16	1.90	1.1	1.85	12°	0°43'	6	60	9,400	
08-00590-07532	20		2.04	1.1	1.85	12°	0°46'	6	70	9,400		
08-00590-07533	25		2.22	1.1	1.85	12°	0°49'	6	70	10,100		
08-00590-07534	30		2.39	1.1	1.85	12°	0°51'	6	70	10,100		
08-00590-07540	20		2.36	1.1	1.85	12°	1°13'	6	70	9,400		
08-00590-07541	30		2.88	1.1	1.85	12°	1°19'	6	70	10,100		
08-00590-07552	2°		30	3.37	1.1	1.85	12°	1°47'	6	70	10,100	

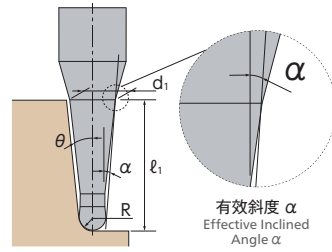
订购方法
How to Order

请指定MRBTNH345 球头半径(R)×颈角(θ)×颈长(ℓ1)。
When you order, indicate MRBTNH345 (R)×(θ)×(ℓ1).

※(γ)为参考值。
※(γ) is reference value.

加工案例
Machining case

M-031



单位 [规格: mm / 价格: 日元]

Unit [Size: mm / Retail Price: JPY]

★ 返修对应 (柄长须在15mm以上。详情请咨询本公司。)

产品代码 Code No.	(R)球头半径 Radius	(θ)颈角 Neck Taper Angle	(l ₁)颈长 Under Neck Length	(d ₁)颈径 Neck Dia.	(l)刃长 Length of Cut	(l ₂)颈长2 Under Neck Length 2	(γ)颈角2 Neck Taper Angle 2	(α)有效斜度 Effective Inclined Angle	(d)柄径 Shank Dia.	(L)全长 Overall Length	定价(日元) Retail Price	
★ 08-00590-10020	R1	30'	12	2.06	1.5	2.5	12°	0°08'	6	60	8,600	
★ 08-00590-10021			16	2.13	1.5	2.5	12°	0°13'	6	60	8,800	
★ 08-00590-10022			20	2.20	1.5	2.5	12°	0°16'	6	70	9,400	
★ 08-00590-10023			25	2.28	1.5	2.5	12°	0°19'	6	70	10,300	
★ 08-00590-10024			30	2.37	1.5	2.5	12°	0°21'	6	70	11,400	
★ 08-00590-10025			40	2.54	1.5	2.5	12°	0°23'	6	80	13,400	
★ 08-00590-10030		1°	12	2.22	1.5	2.5	12°	0°31'	6	60	8,600	
★ 08-00590-10031			16	2.36	1.5	2.5	12°	0°38'	6	60	8,800	
★ 08-00590-10032			20	2.50	1.5	2.5	12°	0°43'	6	70	9,400	
★ 08-00590-10033			25	2.68	1.5	2.5	12°	0°46'	6	70	10,300	
★ 08-00590-10034			30	2.85	1.5	2.5	12°	0°48'	6	70	11,400	
★ 08-00590-10035			40	3.20	1.5	2.5	12°	0°51'	6	80	14,200	
★ 08-00590-10040		1°30'	20	2.81	1.5	2.5	12°	1°09'	6	70	9,400	
★ 08-00590-10041			25	3.07	1.5	2.5	12°	1°13'	6	70	11,200	
★ 08-00590-10042			30	3.33	1.5	2.5	12°	1°16'	6	70	12,900	
★ 08-00590-10043			40	3.85	1.5	2.5	12°	1°19'	6	80	14,300	
★ 08-00590-10050		2°	20	3.11	1.5	2.5	12°	1°35'	6	70	9,400	
★ 08-00590-10051			25	3.46	1.5	2.5	12°	1°40'	6	70	11,200	
★ 08-00590-10052			30	3.81	1.5	2.5	12°	1°43'	6	70	12,900	
★ 08-00590-10053			40	4.51	1.5	2.5	12°	1°47'	6	80	14,300	
★ 08-00590-15020		R1.5	30'	15	3.16	4.5	6	12°	0°18'	6	70	10,300
★ 08-00590-15021				20	3.24	4.5	6	12°	0°21'	6	70	10,600
★ 08-00590-15022				25	3.33	4.5	6	12°	0°22'	6	70	11,200
★ 08-00590-15023				30	3.42	4.5	6	12°	0°24'	6	70	12,900
★ 08-00590-15024	40			3.59	4.5	6	12°	0°25'	6	80	14,300	
★ 08-00590-15030	1°			15	3.31	4.5	6	12°	0°36'	6	70	10,300
★ 08-00590-15031			20	3.49	4.5	6	12°	0°42'	6	70	10,600	
★ 08-00590-15032			25	3.66	4.5	6	12°	0°45'	6	70	11,200	
★ 08-00590-15033			30	3.84	4.5	6	12°	0°48'	6	70	12,900	
★ 08-00590-15034			40	4.19	4.5	6	12°	0°51'	6	80	14,300	
★ 08-00590-15040			1°30'	30	4.26	4.5	6	12°	1°12'	6	70	12,900
★ 08-00590-15041	40			4.78	4.5	6	12°	1°16'	6	80	14,300	
★ 08-00590-15042	2°		50	5.30	4.5	6	12°	1°19'	6	100	16,600	
★ 08-00590-15050			30	4.68	4.5	6	12°	1°36'	6	70	12,900	
★ 08-00590-15051			40	5.37	4.5	6	12°	1°42'	6	80	14,300	
★ 08-00590-20031			R2	1°	30	4.77	6	8	12°	0°44'	6	80
★ 08-00590-20032	40				5.12	6	8	12°	0°48'	6	80	16,200
★ 08-00590-20033	50				5.47	6	8	12°	0°50'	6	100	19,300
★ 08-00590-20034	65.2	-			6	8	-	0°53'	6	110	20,700	

锥颈
Taper Neck涂层
Coating

球头

Ball

P 调质钢
Prehardened SteelH ~52高硬度钢
HRC Hardened SteelH ~60高硬度钢
HRC Hardened SteelH ~65高硬度钢
HRC Hardened SteelM 不锈钢
Stainless SteelS 钛合金
耐热合金
Titanium Alloy
Heat Resistant Alloy常规系列
无限白金涂层
长颈造型
Regular Line
MUGEN PREMIUM
Long Neck Type